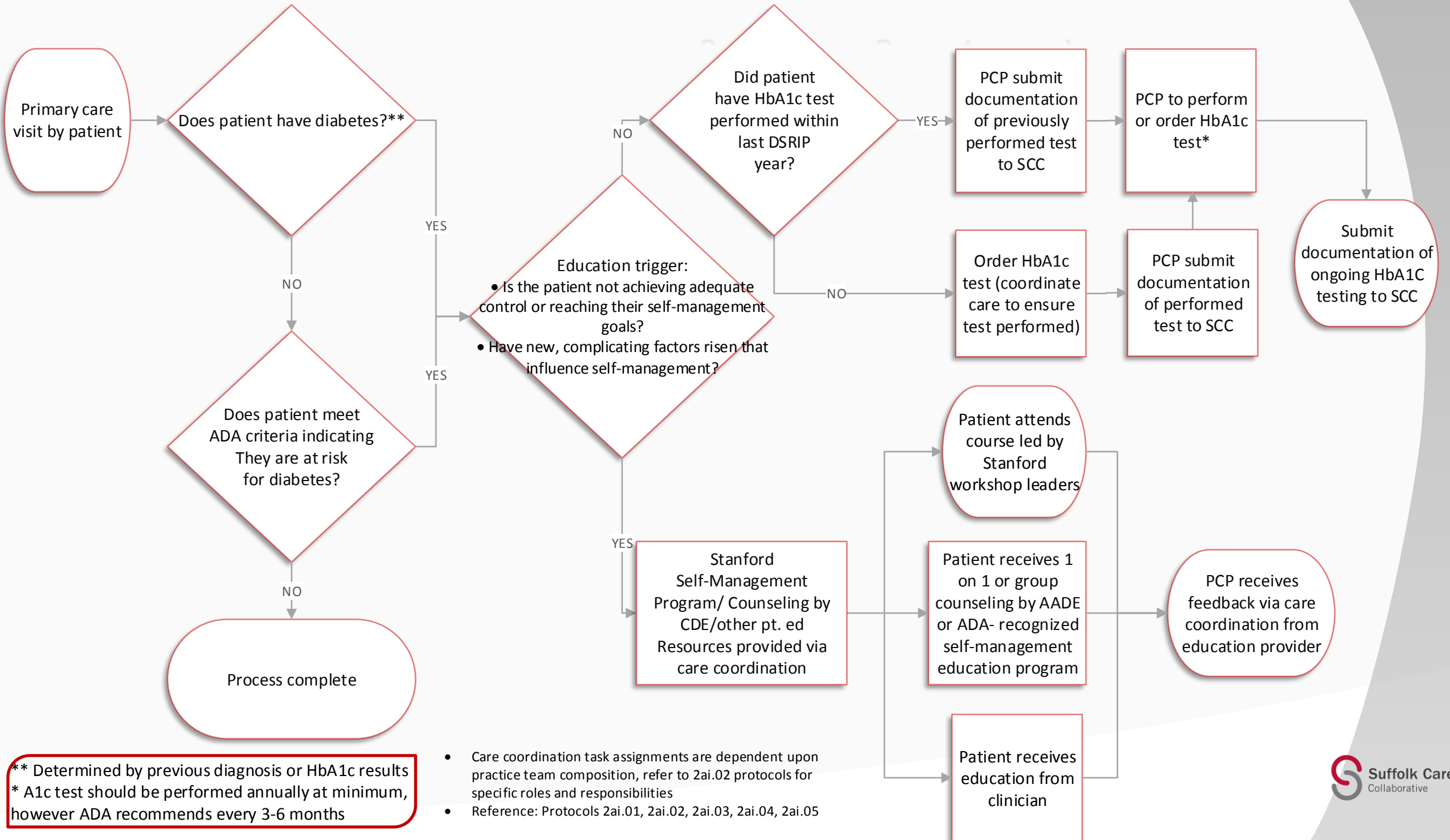


Diabetes Wellness & Self Management Program (DWSP) Flow Chart



** Determined by previous diagnosis or HbA1c results
* A1c test should be performed annually at minimum, however ADA recommends every 3-6 months

- Care coordination task assignments are dependent upon practice team composition, refer to 2ai.02 protocols for specific roles and responsibilities
- Reference: Protocols 2ai.01, 2ai.02, 2ai.03, 2ai.04, 2ai.05